

# NSK

## CORROSION-RESISTANT MOUNTED BALL BEARING UNITS

STAINLESS STEEL AND THERMOPLASTIC UNITS FOR FOOD AND BEVERAGE INDUSTRIES



STAY IN MOTION. STAY IN CONTROL.



## CLEAN, COMPLIANT CAPACITY

### ROLLING BEARINGS AND LINEAR MOTION PRODUCTS FOR FOOD AND BEVERAGE

Withstand corrosive, high-pressure washdowns. Operate with stability and strength under extremely hot and cold temperatures. Resist contamination while running cleanly to support safety and regulatory compliance.

For bearings and precision machine components used in machinery for food and beverage processing, the conventional demands to support high-accuracy, high-speed and high-load motion can only be achieved with augmented technology to overcome these operating challenges.

NSK products for food and beverage industries are optimized to contend with severe and stringent conditions, with highly tailored solutions that include:

- › corrosion-resistant ball bearings, bearing units, ball screws, linear guides and linear actuators
- › heat-resistant ball bearings and lubricants
- › food-grade greases and solid lubricants, retained and sealed-clean with high-performance seals

For manufacturers seeking clean, durable and efficient solutions, NSK delivers consistent reliability to keep production lines running smoothly with high product integrity.

## WASHDOWN TOUGH AND FOOD-SAFE

NSK mounted bearing units for food and beverage plants are essential to ensuring stable and reliable machine performance in washdown, high-humidity and chemical-exposed environments. Engineered from stainless steel or thermoplastic materials, they deliver clean, food-safe and efficient operation to mitigate downtime and extend equipment life through:

- ➔ **Resistance to corrosion and rust** even under constant exposure to water and chemical washdowns
- ➔ **Prevention of contamination and bacterial growth** with easy-to-clean smooth surfaces
- ➔ **Extreme temperature tolerance** in both hot and cold zones
- ➔ **Integrated efficiency** with sealed-clean stainless steel bearings filled with food-grade grease



# BASIC DESIGN FEATURES HOUSINGS AND INSERT BEARINGS

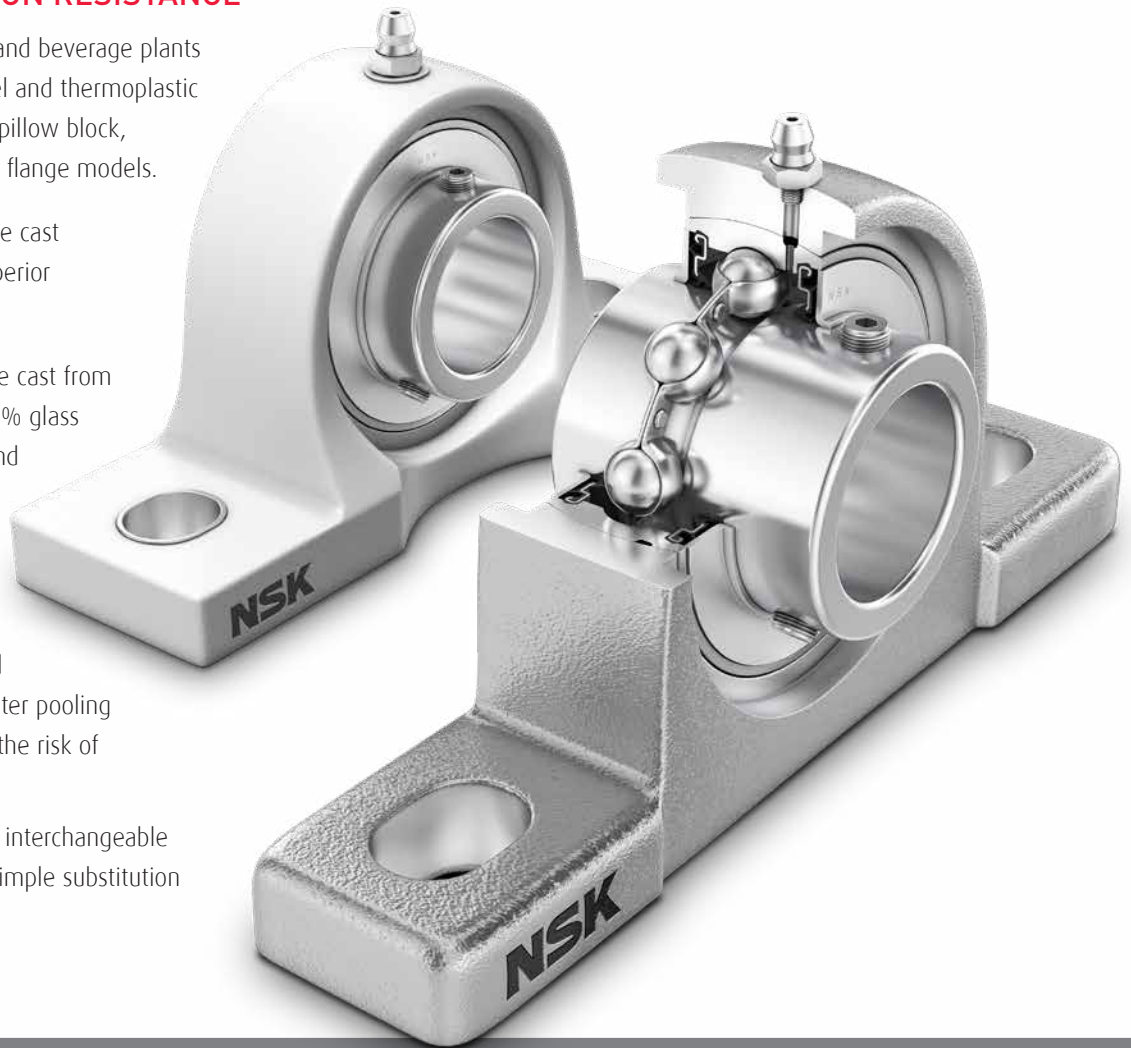
## SUPERIOR CORROSION RESISTANCE

NSK mounted units for food and beverage plants are available in stainless steel and thermoplastic housing material options for pillow block, four-bolt flange and two-bolt flange models.

- › **stainless steel** housings are cast from SUS 316 grade for superior corrosion resistance
- › **thermoplastic** housings are cast from PBT polyester resin with 20% glass fiber for optimal thermal and dimensional stability

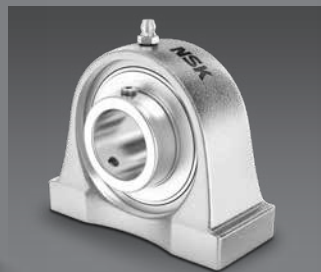
Smooth housing surfaces and solid, flat bases eliminate water pooling after washdown and reduce the risk of bacterial growth.

NSK bearing units are widely interchangeable with alternative models for simple substitution without modification.



Stainless steel pillow block unit **UCSP**  
For shafts 1/2 to 2-1/2", 12 to 65 mm

**P6**



Stainless steel pillow block unit, tapped base **UCSPA**  
For shafts 1/2 to 2", 12 to 50 mm

**P10**



Stainless steel four-bolt flange unit **UCSF**  
For shafts 3/4 to 2-1/2", 20 to 65 mm

**P14**



Stainless steel two-bolt flange unit **UCSFL**  
For shafts 1/2 to 2", 12 to 50 mm

**P18**

## SUPERIOR CONTAMINATION RESISTANCE

NSK corrosion-resistant bearing units are equipped with set screw locking stainless steel ball bearing inserts engineered with high-performance slinger seals to effectively retain grease while preventing ingress of fine particle and fluid contaminants.

An inner ring installed slinger and outer ring installed double-lip contact seal form a virtually impenetrable barrier to contaminants. A seal lip contacting the interior of the slinger provides the first line of defense, reinforced by a second seal lip contacting the inner ring. A third non-contacting internal seal lip guides the flow of lubricant to rolling contact surfaces, thereby improving lubrication performance and extending bearing life.

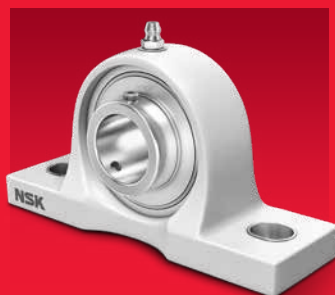
NSK stainless steel inserts are factory-filled with FDA/USDA H1 food-grade grease. Radial internal clearance C3 is standard.



An inner ring installed slinger and advanced double-lip contact seal form a virtually impenetrable barrier to contaminants

## MATERIAL SPECIFICATIONS

- › **bearing rings:** SUS 440C stainless steel equivalent
- › **rolling elements:** SUS 440C stainless steel
- › **cages, slingers and components:** SUS 304 stainless steel
- › **contact seals:** nitrile butadiene rubber (NBR)



Thermoplastic pillow block unit UCVP  
For shafts 3/4 to 2", 20 to 50 mm

**P22**



Thermoplastic pillow block unit, tapped base UCVPAN  
For shafts 3/4 to 1-7/16", 20 to 35 mm

**P24**



Thermoplastic four-bolt flange UCVF  
For shafts 3/4 to 1-9/16", 20 to 40 mm

**P26**

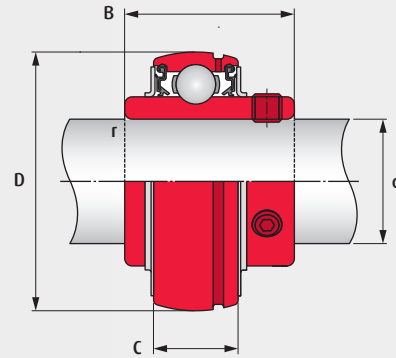


Thermoplastic two-bolt flange UCVFL  
For shafts 3/4 to 1-9/16", 20 to 40 mm

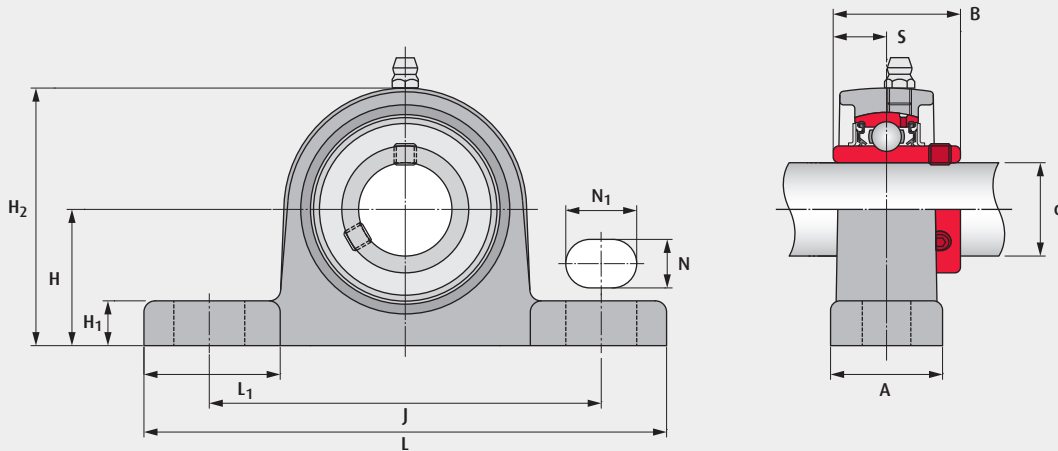
**P28**

# UCSP SERIES PILLOW BLOCK UNITS STAINLESS STEEL

FOR SHAFTS 1/2 TO 1-9/16", 12 TO 40 MILLIMETER



SHAFT DIAMETER		UNIT No.	BEARING No.	BEARING DIMENSIONS				BASIC LOAD RATINGS		UNIT MASS
d				mm / inch				N / lbf		kg / lb
mm	inch			D	B	C	r	dynamic	static	
12		UCSP201XS	UC201XS	40	27.4	13	0.6	8 150	3 850	0.47
	1/2	UCSP201-8XS	UC201-8XS	1.575	1.079	0.512	0.024	1 832	866	1.04
15		UCSP202XS	UC202XS							
	5/8	UCSP202-10XS	UC202-10XS							
17		UCSP203XS	UC203XS							
20	3/4	UCSP204-12S	UC204-12S	47	31.0	16	1.0	10 900	5 350	0.60
		UCSP204S	UC204S	1.850	1.220	0.630	0.039	2 450	1 203	1.32
25	7/8	UCSP205-14S	UC205-14S	52	34.1	17	1.0	11 900	6 300	0.70
	15/16	UCSP205-15S	UC205-15S	2.047	1.343	0.669	0.039	2 675	1 416	1.54
	1	UCSP205S	UC205S							
30	1-1/8	UCSP206-18S	UC206-18S	62	38.1	19	1.0	16 500	9 050	1.10
		UCSP206S	UC206S	2.441	1.500	0.748	0.039	3 709	2 035	2.43
	1-3/16	UCSP206-19S	UC206-19S							
	1-1/4	UCSP206-20S	UC206-20S							
35	1-1/4	UCSP207-20S	UC207-20S	72	42.9	20	1.1	21 800	12 300	1.40
	1-5/16	UCSP207-21S	UC207-21S	2.835	1.689	0.787	0.043	4 901	2 765	3.09
	1-3/8	UCSP207-22S	UC207-22S							
		UCSP207S	UC207S							
	1-7/16	UCSP207-23S	UC207-23S							
40	1-1/2	UCSP208-24S	UC208-24S	80	49.2	21	1.1	24 800	14 300	1.70
	1-9/16	UCSP208-25S	UC208-25S	3.150	1.937	0.827	0.043	5 575	3 215	3.75
		UCSP208S	UC208S							

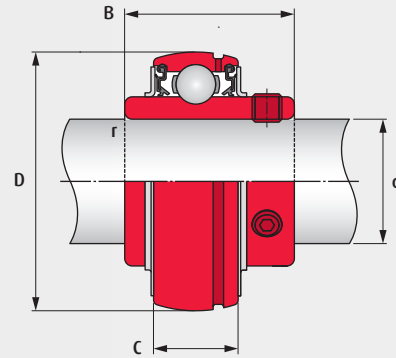


HOUSING No.	UNIT ASSEMBLY DIMENSIONS											BOLT SIZE
	inch / mm											
	H	L	A	J	N	N <sub>1</sub>	H <sub>1</sub>	H <sub>2</sub>	L <sub>1</sub>	B	S	
SP203	1-3/16	5	1-3/16	3-3/4	1/2	23/32	7/16	2-7/32	1-15/32	1.079	0.453	3/8 M10
	30.2	127	30	95	13	18	11	56	37.5	27.4	11.5	
SP204	1-5/16	5	1-3/16	3-3/4	1/2	23/32	7/16	2-15/32	1-19/64	1.220	0.500	3/8 M10
	33.3	127	30	95	13	18	11	63	33	31.0	12.7	
SP205	1-7/16	5-1/2	1-3/16	4-1/8	1/2	3/4	15/32	2-23/32	1-7/16	1.343	0.563	3/8 M10
	36.5	140	30	105	13	19	12	69	36.5	34.1	14.3	
SP206	1-11/16	6-1/2	1-13/32	4-3/4	21/32	13/16	1/2	3-3/16	1-23/32	1.500	0.626	1/2 M14
	42.9	165	36	121	17	21	13	81	43.5	38.1	15.9	
SP207	1-7/8	6-9/16	1-1/2	5	21/32	13/16	9/16	3-19/32	1-17/32	1.689	0.689	1/2 M14
	47.6	167	38	127	17	21	14	91	39	42.9	17.5	
SP208	1-15/16	7-1/4	1-9/16	5-13/32	21/32	13/16	9/16	3-13/16	1-11/16	1.937	0.748	1/2 M14
	49.2	184	40	137	17	21	14	97	43	49.2	19.0	

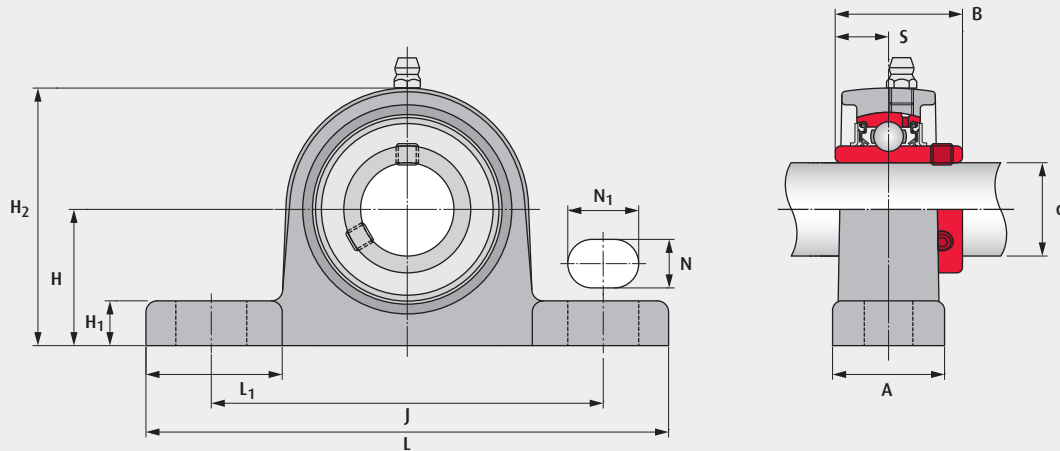
**Note:** Variations of tolerance of the distance from the mounting bottom to the center of the spherical bore for SP203 to SP210 = ± 0.15 mm, for SP211 to SP213 = ± 0.20 mm

# UCSP SERIES PILLOW BLOCK UNITS STAINLESS STEEL

FOR SHAFTS 1-5/8 TO 2-1/2", 45 TO 65 MILLIMETER



SHAFT DIAMETER		UNIT No.	BEARING No.	BEARING DIMENSIONS				BASIC LOAD RATINGS		UNIT MASS
d				mm / inch				N / lbf		kg / lb
mm	inch			D	B	C	r	dynamic	static	
45	1-5/8	UCSP209-26S	UC209-26S	85	49.2	22	1.1	27 800	16 200	2.00
	1-11/16	UCSP209-27S	UC209-27S	3.346	1.937	0.866	0.043	6 250	3 642	4.41
	1-3/4	UCSP209-28S	UC209-28S							
			UCSP209S	UC209S						
50	1-7/8	UCSP210-30S	UC210-30S	90	51.6	24	1.1	29 800	18 600	2.50
	1-15/16	UCSP210-31S	UC210-31S	3.543	2.031	0.945	0.043	6 699	4 181	5.51
		UCSP210S	UC210S							
	2	UCSP210-32S	UC210-32S							
55	2	UCSP211-32S	UC211-32S	100	55.6	25	1.5	36 800	23 500	3.40
	2-1/8	UCSP211-34S	UC211-34S	3.937	2.189	0.984	0.059	8 273	5 283	7.50
		UCSP211S	UC211S							
	2-3/16	UCSP211-35S	UC211-35S							
60	2-1/4	UCSP212-36S	UC212-36S	110	65.1	27	1.5	44 500	29 000	4.50
		UCSP212S	UC212S	4.331	2.563	1.063	0.059	10 004	6 519	9.92
	2-3/8	UCSP212-38S	UC212-38S							
	2-7/16	UCSP212-39S	UC212-39S							
65	2-1/2	UCSP213-40S	UC213-40S	120	65.1	28	1.5	48 600	32 100	5.58
		UCSP213S	UC213S	4.724	2.563	1.102	0.059	10 926	7 216	12.30

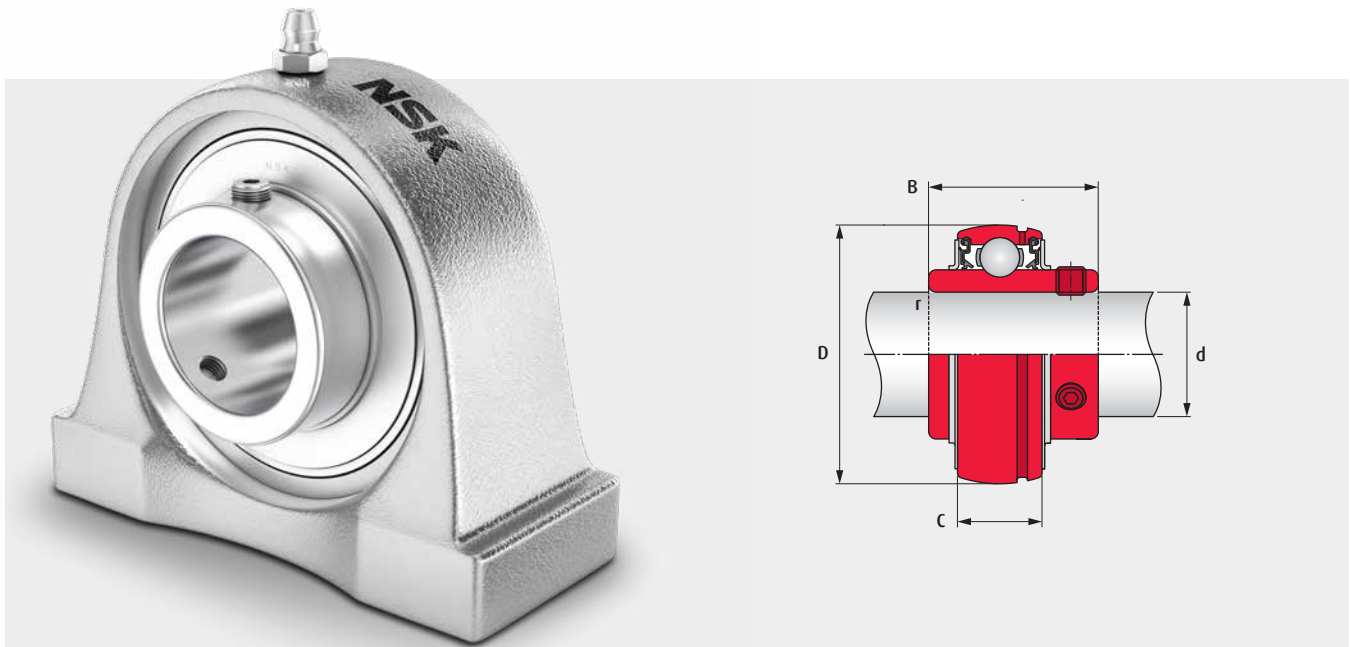


HOUSING No.	UNIT ASSEMBLY DIMENSIONS											BOLT SIZE
	inch / mm											
	H	L	A	J	N	N <sub>1</sub>	H <sub>1</sub>	H <sub>2</sub>	L <sub>1</sub>	B	S	
SP209	2-1/8	7-15/32	1-9/16	5-3/4	21/32	13/16	19/32	4-3/32	1-47/64	1.937	0.748	1/2 M14
	54.0	190	40	146	17	21	15	104	44	49.2	19.0	
SP210	2-1/4	8-1/8	1-25/32	6-1/4	25/32	7/8	5/8	4-3/8	1-7/8	2.031	0.748	5/8 M16
	57.2	206	45	159	20	22	16	111	48	51.6	19.0	
SP211	2-1/2	8-5/8	1-7/8	6-23/32	25/32	7/8	5/8	4-29/32	1-55/64	2.189	0.874	5/8 M16
	63.5	219	48	171	20	22	16	125	47.5	55.6	22.2	
SP212	2-3/4	9-1/2	2-5/32	7-1/4	25/32	31/32	21/32	5-7/16	2-1/32	2.563	1.000	5/8 M16
	69.8	241	55	184	20	25	17	138	51.5	65.1	25.4	
SP213	3	10-7/16	2-1/4	8	31/32	1-9/64	13/16	5-29/32	2-9/32	2.563	1.000	5/8 M16
	76.2	265	57	203	25	29	21	150	58	65.1	25.4	

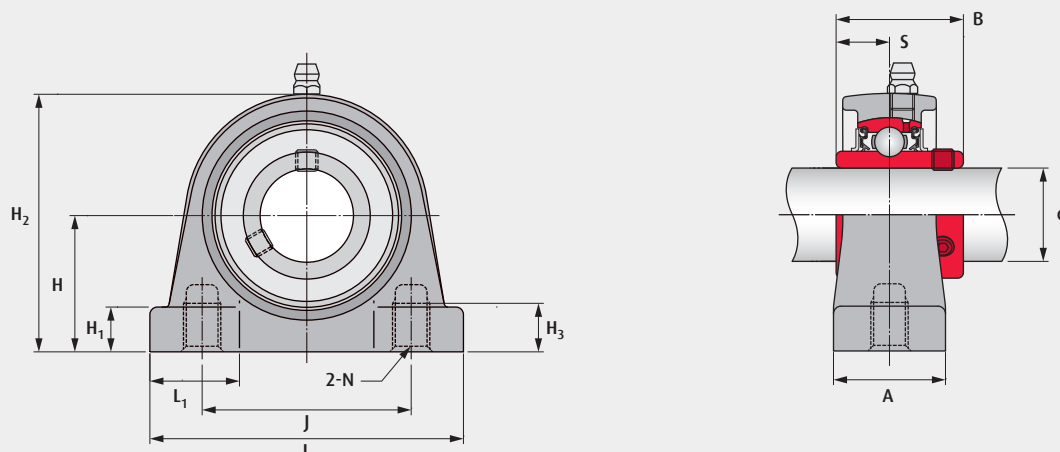
**Note:** Variations of tolerance of the distance from the mounting bottom to the center of the spherical bore for SP203 to SP210 = ± 0.15 mm, for SP211 to SP213 = ± 0.20 mm

# UCSPA SERIES PILLOW BLOCK UNITS STAINLESS STEEL

FOR SHAFTS 1/2 TO 1-7/16", 12 TO 35 MILLIMETER



SHAFT DIAMETER		UNIT No.	BEARING No.	BEARING DIMENSIONS				BASIC LOAD RATINGS		UNIT MASS
d				mm / inch				N / lbf		kg / lb
mm	inch			D	B	C	r	dynamic	static	
12	1/2	UCSPA201XS	UC201XS	40	27.4	13	0.6	8 150	3 850	0.43
		UCSPA201-8XS	UC201-8XS	1.575	1.079	0.512	0.024	1 832	866	0.95
15	5/8	UCSPA202XS	UC202XS	47	31.0	16	1.0	10 900	5 350	0.47
		UCSPA202-10XS	UC202-10XS							
17	3/4	UCSPA203XS	UC203XS	52	34.1	17	1.0	11 900	6 300	0.63
20		UCSPA204-12S	UC204-12S							
	25	15/16	UCSPA205-14S	UC205-14S	62	38.1	19	1.0	16 500	9 050
UCSPA205-16S			UC205-16S	2.441						
30	1-1/8	UCSPA206-18S	UC206-18S	72	42.9	20	1.1	21 800	12 300	1.30
	1-3/16	UCSPA206-19S	UC206-19S							
35	1-1/4	UCSPA207-20S	UC207-20S	72	42.9	20	1.1	21 800	12 300	1.30
	1-5/16	UCSPA207-21S	UC207-21S							
35	1-3/8	UCSPA207-22S	UC207-22S	72	42.9	20	1.1	21 800	12 300	1.30
	1-7/16	UCSPA207-23S	UC207-23S							

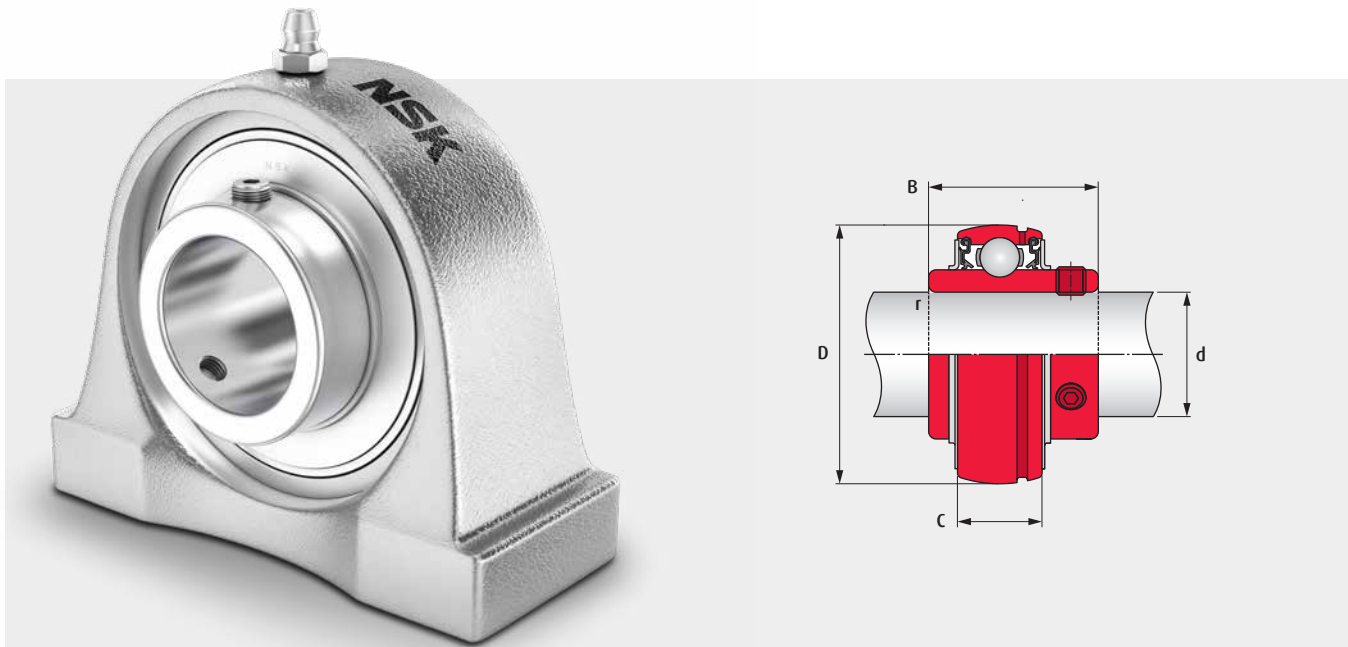


HOUSING No.	UNIT ASSEMBLY DIMENSIONS											BOLT SIZE
	inch / mm											
	H	L	A	J	N	H <sub>1</sub>	H <sub>2</sub>	H <sub>3</sub>	L <sub>1</sub>	B	S	
SPA203	1-3/16	3	1-3/16	2-3/64	M10x1.5	13/32	2-1/4	33/64	7/8	1.079	0.453	--
	30.2	76	30	52		10	57	13	22	27.4	11.5	--
SPA204	1-3/16	3	1-3/16	2-3/64	M10x1.5	13/32	2-3/8	33/64	7/8	1.220	0.500	--
	30.2	76	30	52		10	60	13	22	31.0	12.7	--
SPA205	1-7/16	3-5/16	1-3/16	2-13/64	M10x1.5	15/32	2-23/32	33/64	15/16	1.343	0.563	--
	36.5	84	30	56		12	69	13	24	34.1	14.3	--
SPA206	1-11/16	3-11/16	1-13/32	2-19/32	M14x2	15/32	3-3/16	45/64	1-3/32	1.500	0.626	--
	42.9	94	36	66		12	81	18	28	38.1	15.9	--
SPA207	1-7/8	4-11/32	1-1/2	3-5/32	M14x2	1/2	3-19/32	25/32	1-3/16	1.689	0.689	--
	47.6	110	38	80		13	91	20	30	42.9	17.5	--

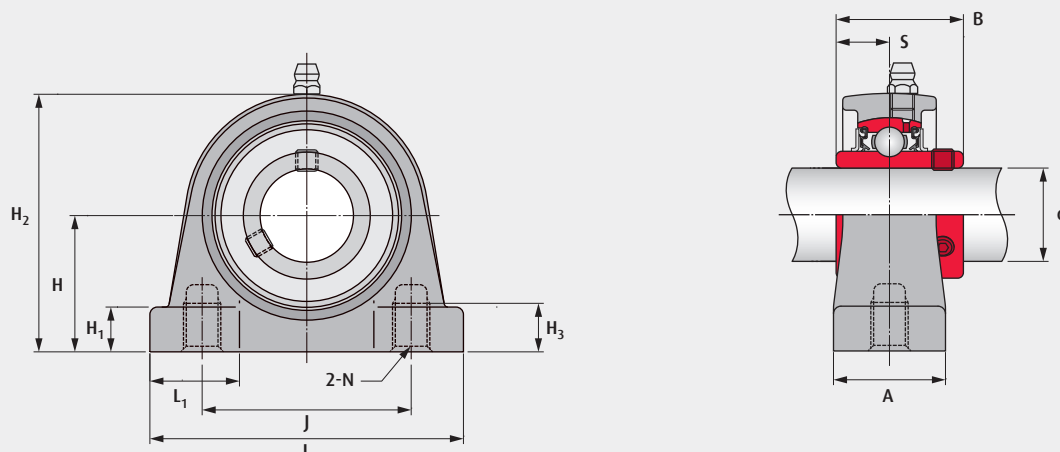
**Note:** Variations of tolerance of the distance from the mounting bottom to the center of the spherical bore for SPA203 to SPA210 = ± 0.15 mm  
 Variations of tolerance of the distance between the centers of the bolt holes for SPA203 to SPA210 = ± 0.5 mm

# UCSPA SERIES PILLOW BLOCK UNITS STAINLESS STEEL

FOR SHAFTS 1-1/2 TO 2", 40 TO 50 MILLIMETER



SHAFT DIAMETER		UNIT No.	BEARING No.	BEARING DIMENSIONS				BASIC LOAD RATINGS		UNIT MASS
d				mm / inch				N / lbf		kg / lb
mm	inch			D	B	C	r	dynamic	static	
40	1-1/2	UCSPA208-24S	UC208-24S	80	49.2	21	1.1	24 800	14 300	1.60
	1-9/16	UCSPA208-25S	UC208-25S	3.150	1.937	0.827	0.043	5 575	3 215	3.53
		UCSPA208S	UC208S							
45	1-5/8	UCSPA209-26S	UC209-26S	85	49.2	22	1.1	27 800	16 200	1.82
	1-11/16	UCSPA209-27S	UC209-27S	3.346	1.937	0.866	0.043	6 250	3 642	4.01
	1-3/4	UCSPA209-28S	UC209-28S							
		UCSPA209S	UC209S							
50	1-7/8	UCSPA210-30S	UC210-30S	90	51.6	24	1.1	29 800	18 600	2.26
	1-15/16	UCSPA210-31S	UC210-31S	3.543	2.031	0.945	0.043	6 699	4 181	4.98
		UCSPA210S	UC210S							
	2	UCSPA210-32S	UC210-32S							

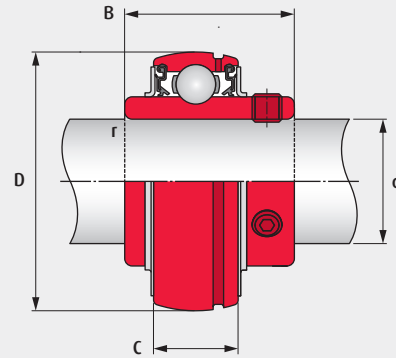


HOUSING No.	UNIT ASSEMBLY DIMENSIONS											BOLT SIZE
	inch / mm											
	H	L	A	J	N	H <sub>1</sub>	H <sub>2</sub>	H <sub>3</sub>	L <sub>1</sub>	B	S	
SPA208	1-15/16	4-9/16	1-9/16	3-5/16	M14x2	1/2	3-13/16	25/32	1-1/4	1.937	0.748	--
	49.2	116	40	84		13	97	20	32	49.2	19.0	--
SPA209	2-1/8	4-23/32	1-9/16	3-35/64	M14x2	1/2	4-3/32	63/64	1-1/4	1.937	0.748	--
	54.0	120	40	90		13	104	25	32	49.2	19.0	--
SPA210	2-1/4	5-1/8	1-25/32	3-45/64	M16x2	9/16	4-3/8	63/64	1-27/64	2.031	0.748	--
	57.2	130	45	94		14	111	25	36	51.6	19.0	--

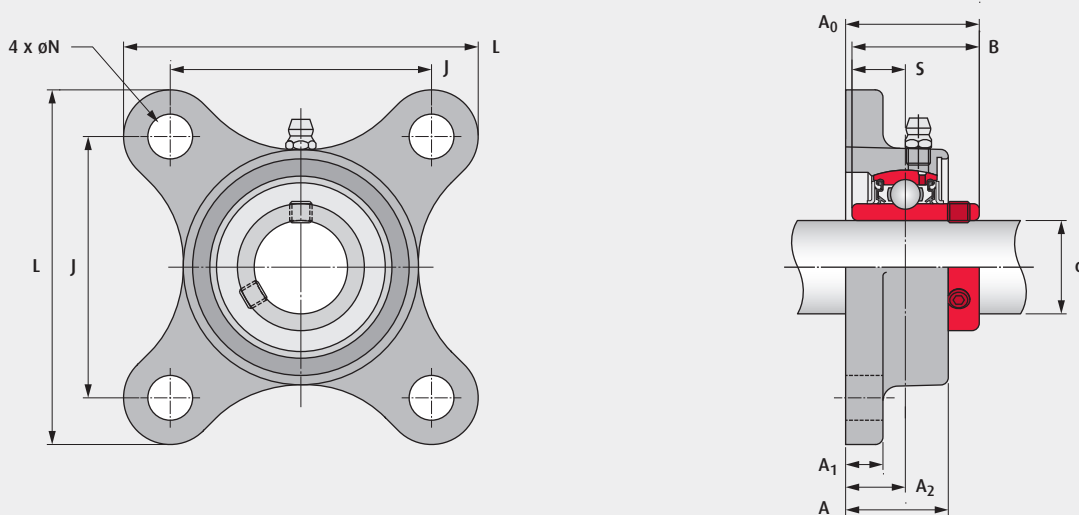
**Note:** Variations of tolerance of the distance from the mounting bottom to the center of the spherical bore for SPA203 to SPA210 = ± 0.15 mm  
 Variations of tolerance of the distance between the centers of the bolt holes for SPA203 to SPA210 = ± 0.5 mm

# UCSF SERIES 4-BOLT FLANGED UNITS STAINLESS STEEL

FOR SHAFTS 3/4 TO 1-3/4", 20 TO 45 MILLIMETER



SHAFT DIAMETER		UNIT No.	BEARING No.	BEARING DIMENSIONS				BASIC LOAD RATINGS		UNIT MASS
d				mm / inch				N / lbf		kg / lb
mm	inch			D	B	C	r	dynamic	static	
20	3/4	UCSF204-12ES	UC204-12S	47	31.0	16	1.0	10 900	5 350	0.53
		UCSF204ES	UC204S	1.850	1.220	0.630	0.039	2 450	1 203	1.17
25	7/8	UCSF205-14ES	UC205-14S	52	34.1	17	1.0	11 900	6 300	0.68
	15/16	UCSF205-15ES	UC205-15S	2.047	1.343	0.669	0.039	2 675	1 416	1.50
	1	UCSF205ES	UC205S							
30	1-1/8	UCSF206-18ES	UC206-18S	62	38.1	19	1.0	16 500	9 050	1.02
		UCSF206ES	UC206S	2.441	1.500	0.748	0.039	3 709	2 035	2.25
	1-3/16	UCSF206-19ES	UC206-19S							
	1-1/4	UCSF206-20ES	UC206-20S							
35	1-1/4	UCSF207-20ES	UC207-20S	72	42.9	20	1.1	21 800	12 300	1.30
	1-5/16	UCSF207-21ES	UC207-21S	2.835	1.689	0.787	0.043	4 901	2 765	2.87
	1-3/8	UCSF207-22ES	UC207-22S							
		UCSF207ES	UC207S							
	1-7/16	UCSF207-23ES	UC207-23S							
40	1-1/2	UCSF208-24ES	UC208-24S	80	49.2	21	1.1	24 800	14 300	1.63
	1-9/16	UCSF208-25ES	UC208-25S	3.150	1.937	0.827	0.043	5 575	3 215	3.59
		UCSF208ES	UC208S							
45	1-5/8	UCSF209-26ES	UC209-26S	85	49.2	22	1.1	27 800	16 200	1.92
	1-11/16	UCSF209-27ES	UC209-27S	3.346	1.937	0.866	0.043	6 250	3 642	4.23
	1-3/4	UCSF209-28ES	UC209-28S							
		UCSF209ES	UC209S							

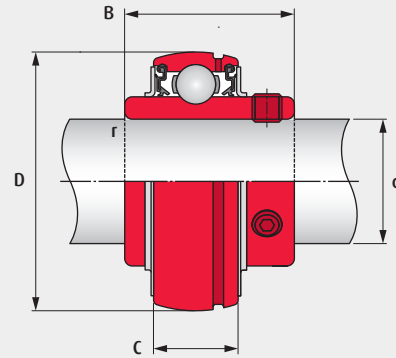


HOUSING No.	UNIT ASSEMBLY DIMENSIONS									BOLT SIZE
	inch / mm									
	L	A	J	N	A <sub>1</sub>	A <sub>2</sub>	A <sub>0</sub>	B	S	
<b>SF204E</b>	3-3/8	1-1/32	2-33/64	7/16	13/32	19/32	1-5/16	1.220	0.500	3/8
	86	26	64	11	10	15	33.3	31.0	12.7	M10
<b>SF205E</b>	3-3/4	1-3/32	2-3/4	29.64	13/32	5/8	1-13/32	1.343	0.563	3/8
	95	27.5	70	11.5	10	16	35.8	34.1	14.3	M10
<b>SF206E</b>	4-1/4	1-7/32	3-17/64	33/64	13/32	45/64	1-19/32	1.500	0.626	3/8
	108	31	83	13	10	18	40.2	38.1	15.9	M10
<b>SF207E</b>	4-19/32	1-11/32	3-5/8	33/64	7/16	3/4	1-3/4	1.689	0.689	7/16
	117	34	92	13	11	19	44.4	42.9	17.5	M12
<b>SF208E</b>	5-1/8	1-13/32	4-1/64	35/64	15/32	53/64	2-1/32	1.937	0.748	1/2
	130	36	102	14	12	21	51.2	49.2	19.0	M14
<b>SF209E</b>	5-13/32	1-1/2	4-9/64	5/8	1/2	55/64	2-1/16	1.937	0.748	1/2
	137	38	105	16	13	22	52.2	49.2	19.0	M14

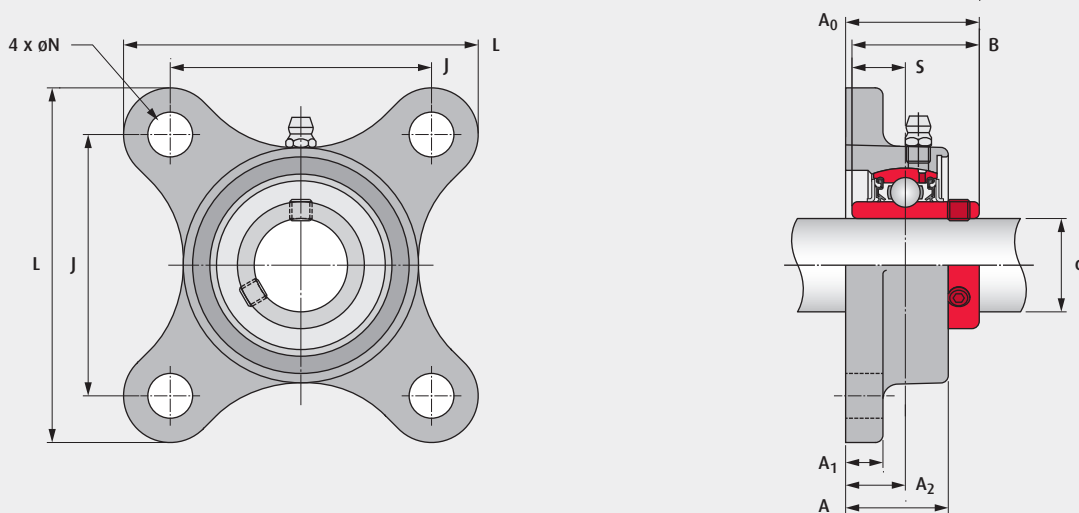
**Note:** Variations of tolerance of the distance from the mounting surface to the center of the spherical bore for SF204E to SF210E = ± 0.5 mm, for SF211E to SF213E = ± 0.8 mm  
 Variations of tolerance of the position of the bolt hole for SF204E to SF210E = ± 0.7 mm, for SF211E to SF213E = ± 1.0 mm  
 Variations of tolerance of the bolt hole diameter for SF204E to SF213E = ± 0.2 mm

# UCSF SERIES 4-BOLT FLANGED UNITS STAINLESS STEEL

FOR SHAFTS 1-7/8 TO 2-1/2", 50 TO 65 MILLIMETER



SHAFT DIAMETER		UNIT No.	BEARING No.	BEARING DIMENSIONS				BASIC LOAD RATINGS		UNIT MASS
d				mm / inch				N / lbf		kg / lb
mm	inch			D	B	C	r	dynamic	static	
50	1-7/8	UCSF210-30ES	UC210-30S	90	51.6	24	1.1	29 800	18 600	2.18
	1-15/16	UCSF210-31ES	UC210-31S	3.543	2.031	0.945	0.043	6 699	4 181	4.81
	2	UCSF210ES	UC210S							
		UCSF210-32ES	UC210-32S							
55	2	UCSF211-32ES	UC211-32S	100	55.6	25	1.5	36 800	23 500	3.01
	2-1/8	UCSF211-34ES	UC211-34S	3.937	2.189	0.984	0.059	8 273	5 283	6.64
	2-3/16	UCSF211ES	UC211S							
		UCSF211-35ES	UC211-35S							
60	2-1/4	UCSF212-36ES	UC212-36S	110	65.1	27	1.5	44 500	29 000	3.82
	2-3/8	UCSF212ES	UC212S	4.331	2.563	1.063	0.059	10 004	6 519	8.42
		UCSF212-38ES	UC212-38S							
		UCSF212-39ES	UC212-39S							
65	2-1/2	UCSF213-40ES	UC213-40S	120	65.1	28	1.5	48 600	32 100	5.02
		UCSF213ES	UC213S	4.724	2.563	1.102	0.059	10 926	7 216	11.07

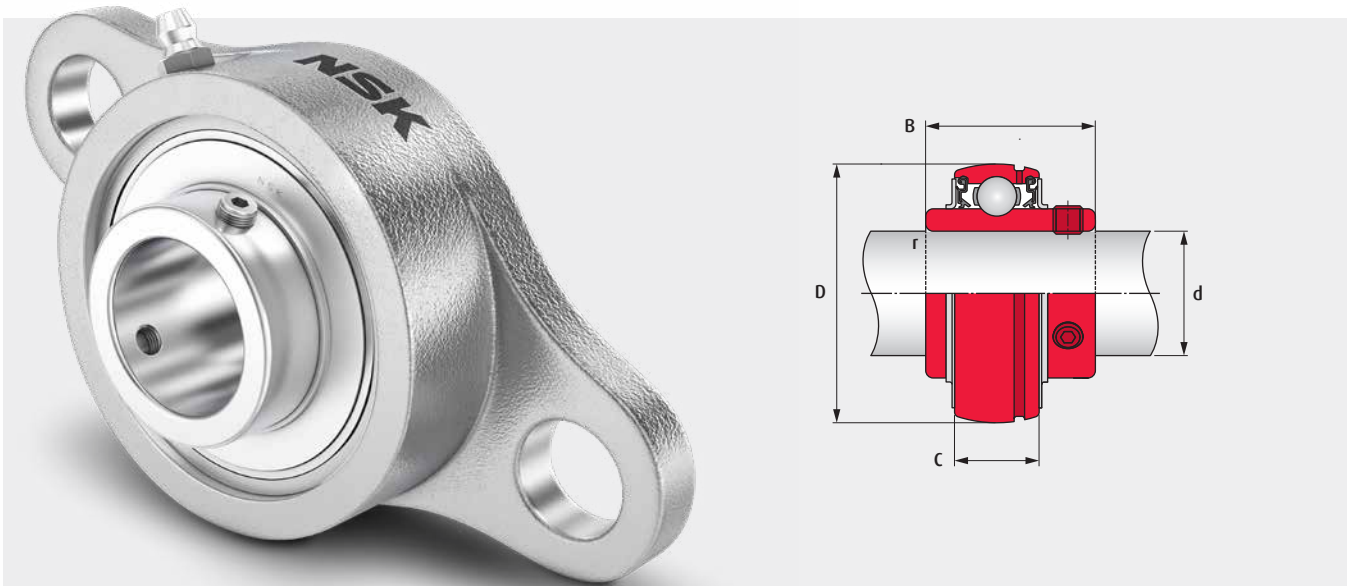


HOUSING No.	UNIT ASSEMBLY DIMENSIONS									BOLT SIZE
	inch / mm									
	L	A	J	N	A <sub>1</sub>	A <sub>2</sub>	A <sub>0</sub>	B	S	
SF210E	5-5/8	1-9/16	4-3/8	5/8	1/2	55/64	2-5/32	2.031	0.748	1/2
	143	40	111	16	13	22	54.6	51.6	19.0	M14
SF211E	6-3/8	1-11/16	5-1/8	43/64	19/32	63/64	2-5/16	2.189	0.874	5/8
	162	43	130	17	15	25	58.4	55.6	22.2	M16
SF212E	6-7/8	1-7/8	5-5/8	43/64	19/32	1-9/64	2-23/32	2.563	1.000	5/8
	175	48	143	17	15	29	68.7	65.1	25.4	M16
SF213E	7-23/64	1-31/32	5-7/8	43/64	45/64	1-3/16	2-3/4	2.563	1.000	5/8
	187	50	149	17	18	30	69.7	65.1	25.4	M16

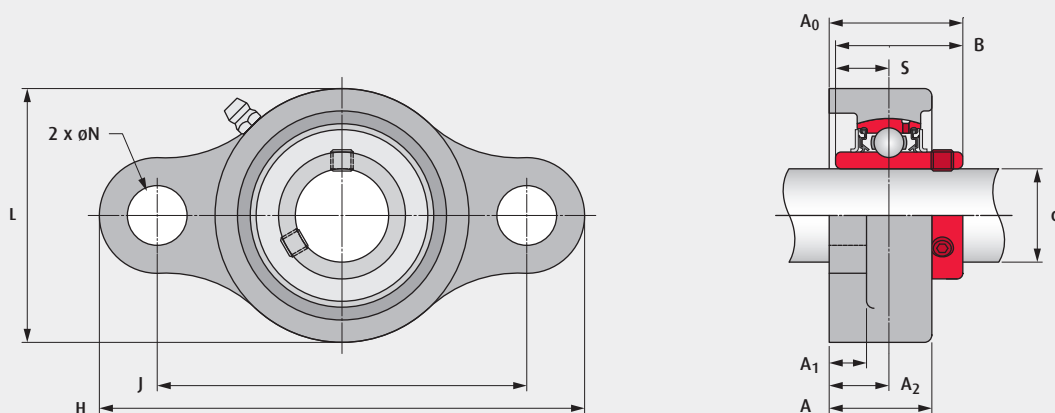
**Note:** Variations of tolerance of the distance from the mounting surface to the center of the spherical bore for SF204E to SF210E = ± 0.5 mm, for SF211E to SF213E = ± 0.8 mm  
 Variations of tolerance of the position of the bolt hole for SF204E to SF210E = ± 0.7 mm, for SF211E to SF213E = ± 1.0 mm  
 Variations of tolerance of the bolt hole diameter for SF204E to SF213E = ± 0.2 mm

# UCSFL SERIES 2-BOLT FLANGED UNITS STAINLESS STEEL

FOR SHAFTS 1/2 TO 1-7/16", 12 TO 35 MILLIMETER



SHAFT DIAMETER		UNIT No.	BEARING No.	BEARING DIMENSIONS				BASIC LOAD RATINGS		UNIT MASS										
d				mm / inch				N / lbf		kg / lb										
mm	inch			D	B	C	r	dynamic	static											
12	1/2	UCSFL201XES	UC201XS	40	27.4	13	0.6	8 150	3 850	0.33										
		UCSFL201-8XES	UC201-8XS	1.575	1.079	0.512	0.024	1 832	866	0.76										
15	5/8	UCSFL202XES	UC202XS	47	31.0	16	1.0	10 900	5 350	0.47										
		UCSFL202-10XES	UC202-10XS								1.850	1.220	0.630	0.039	2 450	1 203	1.08			
17	3/4	UCSFL203XES	UC203XS	52	34.1	17	1.0	11 900	6 300	0.61										
20		UCSFL204-12ES	UC204-12S								2.047	1.343	0.669	0.039	2 675	1 416	1.40			
	25	1	UCSFL205ES	UC205S	62	38.1	19	1.0	16 500	9 050	0.90									
UCSFL205-16ES			UC205-16S	2.441								1.500	0.748	0.039	3 709	2 035	2.07			
30	1-1/8	UCSFL206-18ES	UC206-18S	72	42.9	20	1.1	21 800	12 300	1.10										
	1-3/16	UCSFL206ES	UC206S								2.835	1.689	0.787	0.043	4 901	2 765	2.52			
35	1-1/4	UCSFL206-19ES	UC206-19S	72	42.9	20	1.1	21 800	12 300	1.10										
	1-1/4	UCSFL206-20ES	UC206-20S								1-5/16	UCSFL207-20ES	UC207-20S	2.835	1.689	0.787	0.043	4 901	2 765	2.52
	1-3/8	UCSFL207ES	UC207S									1-3/8	UCSFL207-22ES							
1-7/16	UCSFL207-23ES	UC207-23S	1-7/16	UCSFL207ES	UC207S															

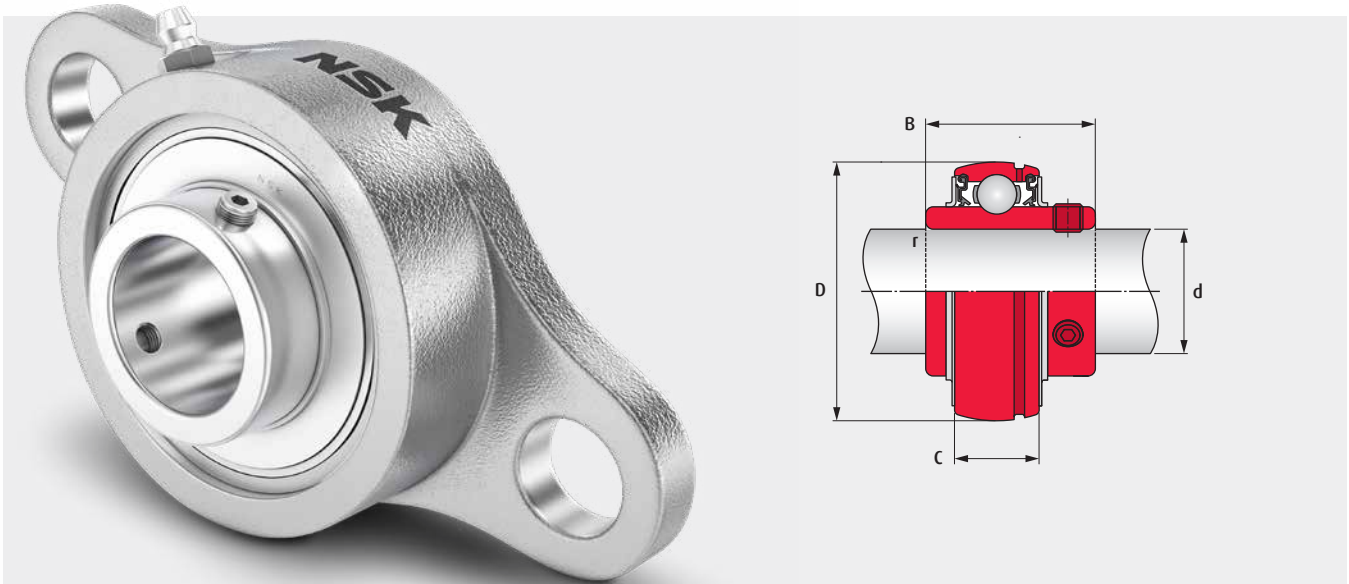


HOUSING No.	UNIT ASSEMBLY DIMENSIONS										BOLT SIZE
	inch / mm										
	H	L	A	J	N	A <sub>1</sub>	A <sub>2</sub>	A <sub>0</sub>	B	S	
<b>SFL203E</b>	3-27/32	2-1/16	15/16	3	25/64	13/32	35/64	1-3/16	1.079	0.453	3/8
	98	52	24	76.2	10	10	14	29.9	27.4	11.5	M10
<b>SFL204E</b>	4-7/16	2-13/32	1-1/32	3-17/32	25/64	13/32	19/32	1-5/16	1.220	0.500	3/8
	113	61	26	89.7	10	10	15	33.3	31.0	12.7	M10
<b>SFL205E</b>	5-1/8	2-19/32	1-3/32	3-57/64	15/32	13/32	5/8	1-13/32	1.343	0.563	1/2
	130	66	27.5	98.8	12	10	16	35.8	34.1	14.3	M14
<b>SFL206E</b>	5-13/16	3-1/16	1-7/32	4-19/32	15/32	13/32	45/64	1-19/32	1.500	0.626	1/2
	148	78	31	116.7	12	10	18	40.2	38.1	15.9	M14
<b>SFL207E</b>	6-11/32	3-11/32	1-11/32	5-1/8	33/64	7/16	3/4	1-3/4	1.689	0.689	1/2
	161	85	34	130.2	13	11	19	44.4	42.9	17.5	M14

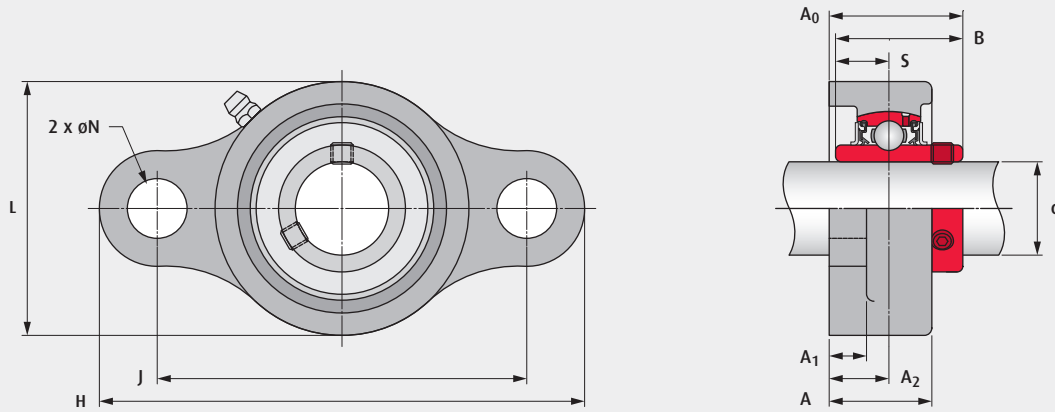
**Note:** Variations of tolerance of the distance from the mounting surface to the center of the spherical bore for SFL203E to SFL210E = ± 0.5 mm  
 Variations of tolerance of the distance between the centers of the bolt holes for SFL203E to SFL210E = ± 0.5 mm  
 Variations of tolerance of the bolt hole diameter for SFL203E to SFL210E = ± 0.2 mm

# UCSFL SERIES 2-BOLT FLANGED UNITS STAINLESS STEEL

FOR SHAFTS 1-1/2 TO 2", 40 TO 50 MILLIMETER



SHAFT DIAMETER		UNIT No.	BEARING No.	BEARING DIMENSIONS				BASIC LOAD RATINGS		UNIT MASS
d				mm / inch				N / lbf		kg / lb
mm	inch			D	B	C	r	dynamic	static	
40	1-1/2	UCSFL208-24ES	UC208-24S	80	49.2	21	1.1	24 800	14 300	1.40
	1-9/16	UCSFL208-25ES	UC208-25S	3.150	1.937	0.827	0.043	5 575	3 215	3.21
		UCSFL208ES	UC208S							
45	1-5/8	UCSFL209-26ES	UC209-26S	85	49.2	22	1.1	27 800	16 200	1.60
	1-11/16	UCSFL209-27ES	UC209-27S	3.346	1.937	0.866	0.043	6 250	3 642	3.67
	1-3/4	UCSFL209-28ES	UC209-28S							
		UCSFL209ES	UC209S							
50	1-7/8	UCSFL210-30ES	UC210-30S	90	51.6	24	1.1	29 800	18 600	1.90
	1-15/16	UCSFL210-31ES	UC210-31S	3.543	2.031	0.945	0.043	6 699	4 181	4.36
		UCSFL210ES	UC210S							
	2	UCSFL210-32ES	UC210-32S							

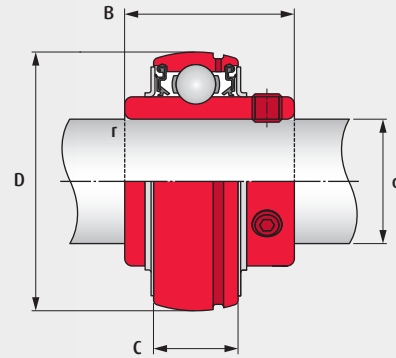


HOUSING No.	UNIT ASSEMBLY DIMENSIONS										BOLT SIZE
	inch / mm										
	H	L	A	J	N	A <sub>1</sub>	A <sub>2</sub>	A <sub>0</sub>	B	S	
<b>SFL208E</b>	6-7/8	3-11/16	1-13/32	5-21/32	33/64	15/32	53/64	2-1/32	1.937	0.748	1/2 M14
	175	94	36	143.7	13	12	21	51.2	49.2	19.0	
<b>SFL209E</b>	7-13/32	3-15/16	1-1/2	5-27/32	19/32	1/2	55/64	2-1/16	1.937	0.748	5/8 M16
	188	100	38	148.4	15	13	22	52.2	49.2	19.0	
<b>SFL210E</b>	7-3/4	4-3/16	1-9/16	6-3/16	19/32	1/2	55/64	2-5/32	2.031	0.748	5/8 M16
	197	106	40	157	15	13	22	54.6	51.6	19.0	

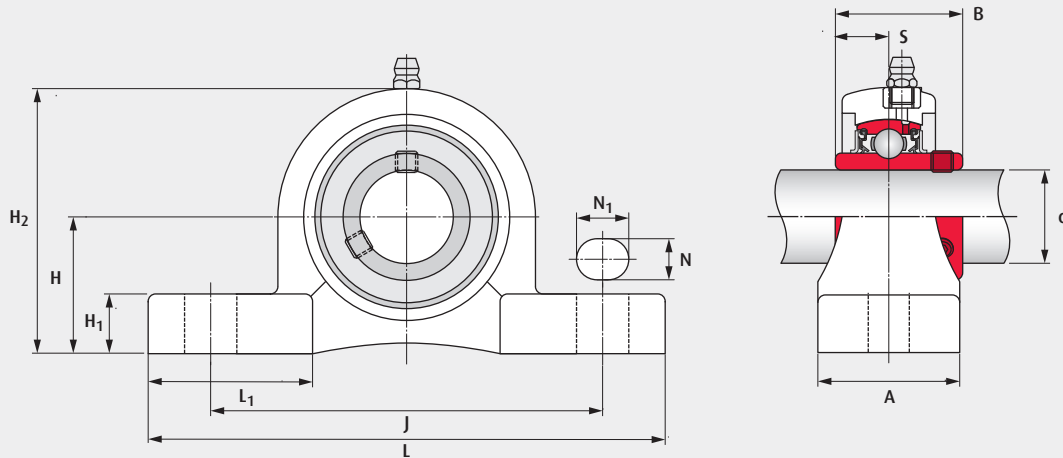
**Note:** Variations of tolerance of the distance from the mounting surface to the center of the spherical bore for SFL203E to SFL210E = ± 0.5 mm  
 Variations of tolerance of the distance between the centers of the bolt holes for SFL203E to SFL210E = ± 0.5 mm  
 Variations of tolerance of the bolt hole diameter for SFL203E to SFL210E = ± 0.2 mm

# UCVP SERIES PILLOW BLOCK UNITS THERMOPLASTIC

FOR SHAFTS 3/4 TO 2", 20 TO 50 MILLIMETER



SHAFT DIAMETER		UNIT No.	BEARING No.	BEARING DIMENSIONS				BASIC LOAD RATINGS		UNIT MASS
d				mm / inch				N / lbf		kg / lb
mm	inch			D	B	C	r	dynamic	static	
20	3/4	UCVP204-12S	UC204-12S	47	31.0	16	1.0	10 900	5 350	0.31
		UCVP204S	UC204S	1.850	1.220	0.630	0.039	2 450	1 203	0.68
25	7/8	UCVP205-14S	UC205-14S	52	34.1	17	1.0	11 900	6 300	0.35
	15/16	UCVP205-15S	UC205-15S	2.047	1.343	0.669	0.039	2 675	1 416	0.77
	1	UCVP205S	UC205S							
30	1-1/8	UCVP206-18S	UC206-18S	62	38.1	19	1.0	16 500	9 050	0.55
	1-3/16	UCVP206S	UC206S	2.441	1.500	0.748	0.039	3 709	2 035	1.21
	1-1/4	UCVP206-19S	UC206-19S							
35	1-1/4	UCVP206-20S	UC206-20S							
	1-1/4	UCVP207-20S	UC207-20S	72	42.9	20	1.1	21 800	12 300	0.75
	1-5/16	UCVP207-21S	UC207-21S	2.835	1.689	0.787	0.043	4 901	2 765	1.65
	1-3/8	UCVP207-22S	UC207-22S							
40	1-7/16	UCVP207S	UC207S							
	1-7/16	UCVP207-23S	UC207-23S							
	1-1/2	UCVP208-24S	UC208-24S	80	49.2	21	1.1	24 800	14 300	0.97
45	1-9/16	UCVP208-25S	UC208-25S	3.150	1.937	0.827	0.043	5 575	3 215	2.14
	1-5/8	UCVP208S	UC208S							
	1-5/8	UCVP209-26S	UC209-26S	85	49.2	22	1.1	27 800	16 200	1.10
50	1-11/16	UCVP209-27S	UC209-27S	3.346	1.937	0.866	0.043	6 250	3 642	2.43
	1-3/4	UCVP209-28S	UC209-28S							
	1-3/4	UCVP209S	UC209S							
50	1-7/8	UCVP210-30S	UC210-30S	90	51.6	24	1.1	29 800	18 600	1.30
	1-15/16	UCVP210-31S	UC210-31S	3.543	2.031	0.945	0.043	6 699	4 181	2.87
	2	UCVP210S	UC210S							
	2	UCVP210-32S	UC210-32S							

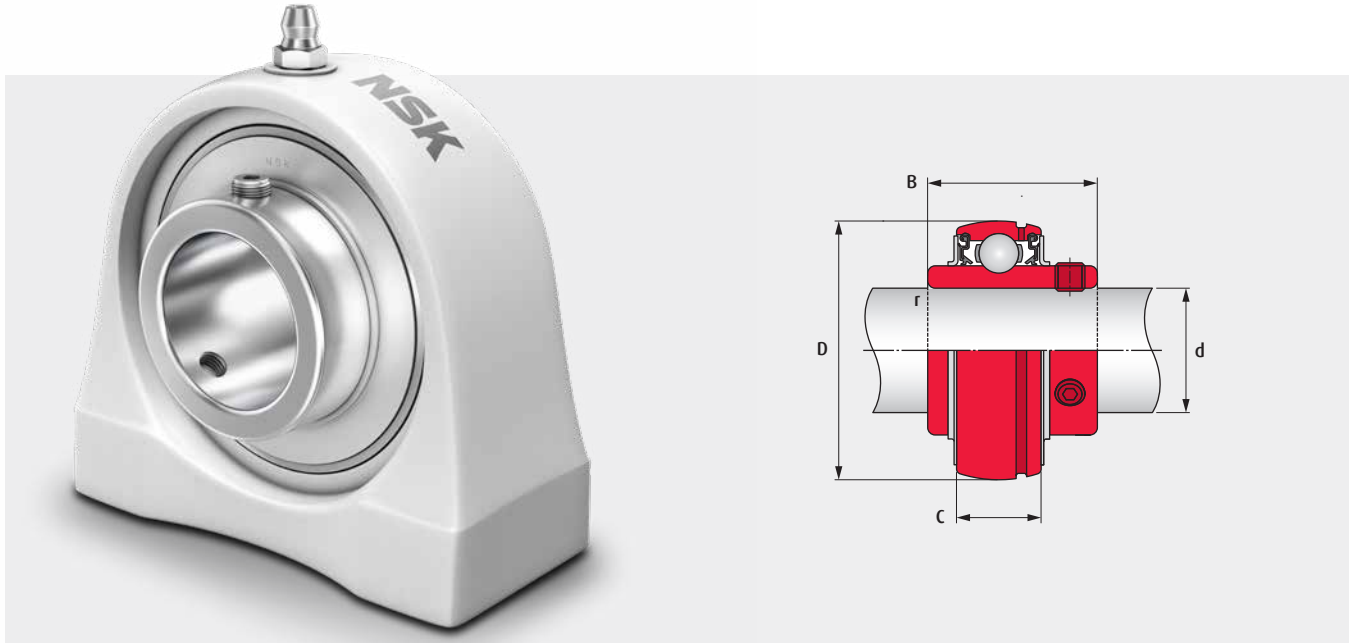


HOUSING No.	UNIT ASSEMBLY DIMENSIONS											BOLT SIZE
	inch / mm											
	H	L	A	J	N	N <sub>1</sub>	H <sub>1</sub>	H <sub>2</sub>	L <sub>1</sub>	B	S	
VP204	1-5/16	5	1-1/2	3-3/4	7/16	9/16	9/16	2-19/32	1-5/8	1.220	0.500	3/8 M10
	33.3	127	38	95	11	14	14	66	41	31.0	12.7	
VP205	1-7/16	5-9/16	1-1/2	4-1/8	7/16	9/16	5/8	2-25/32	1-27/32	1.343	0.563	3/8 M10
	36.5	141	38	105	11	14	16	71	47	34.1	14.3	
VP206	1-11/16	6-13/32	1-13/16	4-11/16	9/16	23/32	23/32	3-5/16	2-1/16	1.500	0.626	1/2 M12
	42.9	163	46	119	14	18	18	84	52	38.1	15.9	
VP207	1-7/8	6-5/8	1-7/8	5	9/16	23/32	23/32	3-3/4	2-1/16	1.689	0.689	1/2 M12
	47.6	168	48	127	14	18	18	95	52	42.9	17.5	
VP208	1-15/16	7-1/4	2-1/8	5-13/32	9/16	23/32	25/32	3-31/32	2-9/32	1.937	0.748	1/2 M12
	49.2	184	54	137	14	18	20	101	58	49.2	19.0	
VP209	2-1/8	7-9/16	2-1/8	5-3/4	21/32	25/32	29/32	4-3/16	2-9/32	1.937	0.748	5/8 M14
	54.0	192	54	146	17	20	23	106	58	49.2	19.0	
VP210	2-1/4	8-1/8	2-3/8	6-1/4	21/32	25/32	29/32	4-1/2	2-15/32	2.031	0.748	5/8 M14
	57.2	206	60	159	17	20	23	114	63	51.6	19.0	

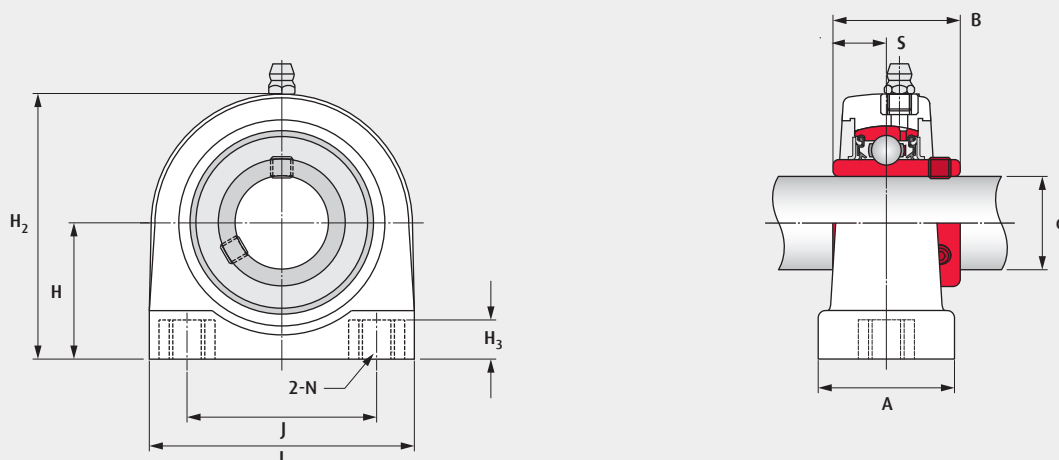
Note: Variations of tolerance of the distance from the mounting bottom to the center of the spherical bore for VP204 to VP210 = ± 0.2 mm

# UCVPAN SERIES PILLOW BLOCK UNITS THERMOPLASTIC

FOR SHAFTS 3/4 TO 1-7/16", 20 TO 35 MILLIMETER



SHAFT DIAMETER		UNIT No.	BEARING No.	BEARING DIMENSIONS				BASIC LOAD RATINGS		UNIT MASS
d				mm / inch				N / lbf		kg / lb
mm	inch			D	B	C	r	dynamic	static	
20	3/4	UCVPAN204-12S	UC204-12S	47	31.0	16	1.0	10 900	5 350	0.26
		UCVPAN204S	UC204S	1.850	1.220	0.630	0.039	2 450	1 203	0.57
25	7/8	UCVPAN205-14S	UC205-14S	52	34.1	17	1.0	11 900	6 300	0.36
	15/16	UCVPAN205-15S	UC205-15S	2.047	1.343	0.669	0.039	2 675	1 416	0.79
	1	UCVPAN205S	UC205S							
30	1-1/8	UCVPAN206-18S	UC206-18S	62	38.1	19	1.0	16 500	9 050	0.54
		UCVPAN206S	UC206S	2.441	1.500	0.748	0.039	3 709	2 035	1.19
	1-3/16	UCVPAN206-19S	UC206-19S							
	1-1/4	UCVPAN206-20S	UC206-20S							
35	1-1/4	UCVPAN207-20S	UC207-20S	72	42.9	20	1.1	21 800	12 300	0.84
	1-5/16	UCVPAN207-21S	UC207-21S	2.835	1.689	0.787	0.043	4 901	2 765	1.85
	1-3/8	UCVPAN207-22S	UC207-22S							
		UCVPAN207S	UC207S							
	1-7/16	UCVPAN207-23S	UC207-23S							

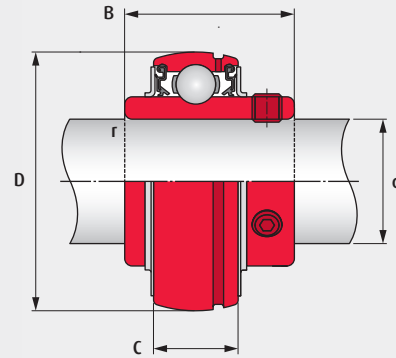


HOUSING No.	UNIT ASSEMBLY DIMENSIONS									BOLT SIZE
	inch / mm									
	H	L	A	J	N	H <sub>2</sub>	H <sub>3</sub>	B	S	
VPAN204	3-5/16	2-7/8	1-11/32	2	3/8 - 16UNC	2-19/32	1/2	1.220	0.500	--
	33.3	73	34.5	50.8		65.5	13	31.0	12.7	--
VPAN205	1-7/16	2-25/32	1-7/16	2	3/8 - 16UNC	2-25/32	1/2	1.343	0.563	--
	36.5	71	36.5	50.8		71	13	34.1	14.3	--
VPAN206	1-11/16	3-31/32	1-11/16	3	7/16 - 14UNC	3-5/16	5/8	1.500	0.626	--
	42.9	101	42.5	76.2		84	16	38.1	15.9	--
VPAN207	1-7/8	4-11/32	1-7/8	3-1/4	1/2 - 13UNC	3-3/4	5/8	1.689	0.689	--
	47.6	110	48	82.6		95	16	42.9	17.5	--

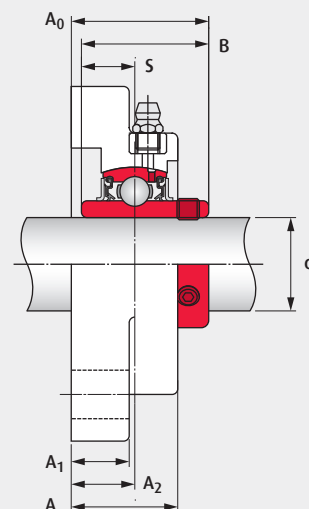
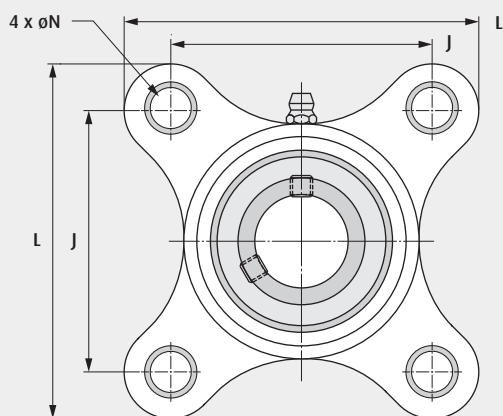
**Note:** Variations of tolerance of the distance from the mounting bottom to the center of the spherical bore for VPAN204 to VPAN207 = ± 0.2 mm  
 Variations of tolerance of the distance between the centers of the bolt holes for VPAN204 to VPAN207 = ± 0.6 mm

# UCVF SERIES 4-BOLT FLANGED UNITS THERMOPLASTIC

FOR SHAFTS 3/4 TO 1-9/16", 20 TO 40 MILLIMETER



SHAFT DIAMETER		UNIT No.	BEARING No.	BEARING DIMENSIONS				BASIC LOAD RATINGS		UNIT MASS
d				mm / inch				N / lbf		kg / lb
mm	inch			D	B	C	r	dynamic	static	
20	3/4	UCVF204-12S	UC204-12S	47	31	16	1.0	10 900	5 350	0.27
		UCVF204S	UC204S	1.850	1.220	0.630	0.039	2 450	1 203	0.60
25	7/8	UCVF205-14S	UC205-14S	52	34.1	17	1.0	11 900	6 300	0.39
	15/16	UCVF205-15S	UC205-15S	2.047	1.343	0.669	0.039	2 675	1 416	0.86
	1	UCVF205S	UC205S							
30	1-1/8	UCVF206-18S	UC206-18S	62	38.1	19	1.0	16 500	9 050	0.53
		UCVF206S	UC206S	2.441	1.500	0.748	0.039	3 709	2 035	1.17
	1-3/16	UCVF206-19S	UC206-19S							
	1-1/4	UCVF206-20S	UC206-20S							
35	1-1/4	UCVF207-20S	UC207-20S	72	42.9	20	1.1	21 800	12 300	0.73
	1-5/16	UCVF207-21S	UC207-21S	2.835	1.689	0.787	0.043	4 901	2 765	1.61
	1-3/8	UCVF207-22S	UC207-22S							
		UCVF207S	UC207S							
	1-7/16	UCVF207-23S	UC207-23S							
40	1-1/2	UCVF208-24S	UC208-24S	80	49.2	21	1.1	24 800	14 300	0.96
	1-9/16	UCVF208-25S	UC208-25S	3.150	1.937	0.827	0.043	5 575	3 215	2.12
		UCVF208S	UC208S							

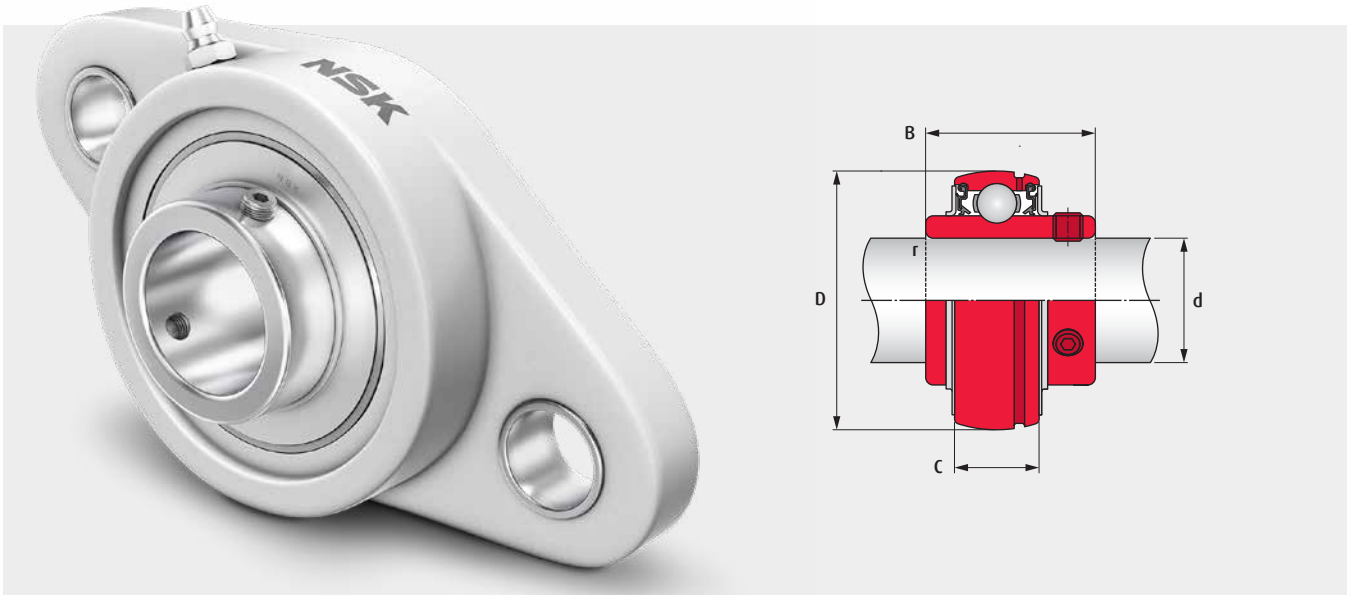


HOUSING No.	UNIT ASSEMBLY DIMENSIONS									BOLT SIZE
	inch / mm									
	L	A	J	N	A <sub>1</sub>	A <sub>2</sub>	A <sub>0</sub>	B	S	
VF204	3-3/8	1-3/32	2-1/2	7/16	17/32	45/64	1-7/16	1.220	0.500	3/8
	86	27.8	63.5	11	13.4	18	36.3	31.0	12.7	M10
VF205	3-3/4	1-1/8	2-3/4	7/16	5/8	43/64	1-7/16	1.343	0.563	3/8
	95	28.5	70	11	15.5	17	36.8	34.1	14.3	M10
VF206	4-7/32	1-1/4	3-17/64	7/16	9/16	3/4	1-5/8	1.500	0.626	3/8
	107	31.7	83	11	14.5	19.2	41.4	38.1	15.9	M10
VF207	4-21/32	1-11/32	3-5/8	33/64	5/8	27/32	1-27/32	1.689	0.689	1/2
	118	34.5	92	13	15.5	21.5	46.9	42.9	17.5	M12
VF208	5-1/8	1-15/32	4-1/64	35/64	21/32	29/32	2-3/32	1.937	0.748	1/2
	130	37.2	102	14	17	23	53.2	49.2	19.0	M12

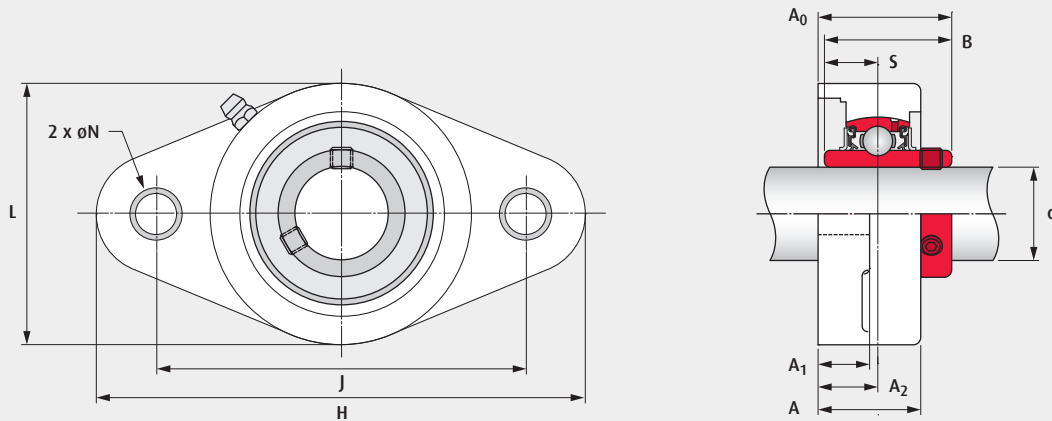
**Note:** Variations of tolerance of the distance from the mounting surface to the center of the spherical bore for VF204 to VF208 = ± 0.5 mm  
 Variations of tolerance of the position of the bolt hole for VF204 to VF208 = ± 0.7 mm

# UCVFL SERIES 2-BOLT FLANGED UNITS THERMOPLASTIC

FOR SHAFTS 3/4 TO 1-9/16", 20 TO 40 MILLIMETER



SHAFT DIAMETER		UNIT No.	BEARING No.	BEARING DIMENSIONS				BASIC LOAD RATINGS		UNIT MASS
d				mm / inch				N / lbf		kg / lb
mm	inch			D	B	C	r	dynamic	static	
20	3/4	UCVFL204-12S	UC204-12S	47	31	16	1.0	10 900	5 350	0.26
		UCVFL204S	UC204S	1.850	1.220	0.630	0.039	2 450	1 203	0.57
25	7/8	UCVFL205-14S	UC205-14S	52	34.1	17	1.0	11 900	6 300	0.32
	15/16	UCVFL205-15S	UC205-15S	2.047	1.343	0.669	0.039	2 675	1 416	0.71
	1	UCVFL205S	UC205S							
30	1-1/8	UCVFL206-18S	UC206-18S	62	38.1	19	1.0	16 500	9 050	0.47
		UCVFL206S	UC206S	2.441	1.500	0.748	0.039	3 709	2 035	1.04
	1-3/16	UCVFL206-19S	UC206-19S							
	1-1/4	UCVFL206-20S	UC206-20S							
35	1-1/4	UCVFL207-20S	UC207-20S	72	42.9	20	1.1	21 800	12 300	0.66
	1-5/16	UCVFL207-21S	UC207-21S	2.835	1.689	0.787	0.043	4 901	2 765	1.46
	1-3/8	UCVFL207-22S	UC207-22S							
		UCVFL207S	UC207S							
	1-7/16	UCVFL207-23S	UC207-23S							
40	1-1/2	UCVFL208-24S	UC208-24S	80	49.2	21	1.1	24 800	14 300	0.85
	1-9/16	UCVFL208-25S	UC208-25S	3.150	1.937	0.827	0.043	5 575	3 215	1.87
		UCVFL208S	UC208S							

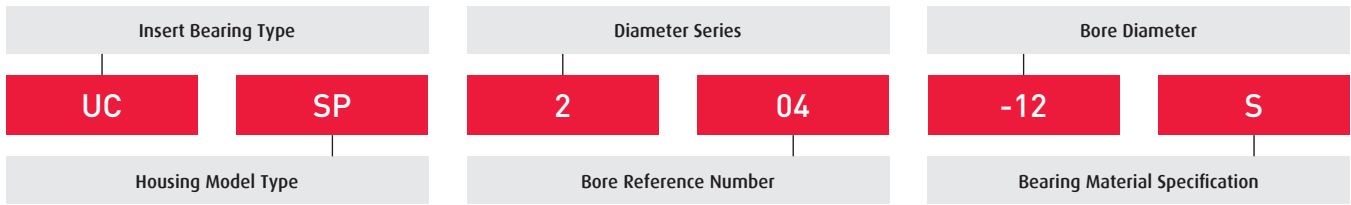


HOUSING No.	UNIT ASSEMBLY DIMENSIONS										BOLT SIZE
	inch / mm										
	H	L	A	J	N	A <sub>1</sub>	A <sub>2</sub>	A <sub>0</sub>	B	S	
<b>VFL204</b>	4-7/16	2-9/16	1-1/16	3-35/64	7/16	17/32	19/32	1-5/16	1.220	0.500	3/8
	113	65	27	90	11	13.5	15	33.3	31.0	12.7	M10
<b>VFL205</b>	5-5/32	2-3/4	1-3/32	3-57/64	7/16	9/16	5/8	1-13/32	1.343	0.563	3/8
	131	70	28	99	11	14	16	35.8	34.1	14.3	M10
<b>VFL206</b>	5-13/16	3-5/32	1-7/32	4-39/64	7/16	9/16	45/64	1-19/32	1.500	0.626	3/8
	148	80	31	117	11	14.5	18	40.2	38.1	15.9	M10
<b>VFL207</b>	6-15/32	3-17/32	1-5/16	5-1/8	33/64	5/8	3/4	1-3/4	1.689	0.689	7/16
	164	90	33	130	13	15.5	19	44.4	42.9	17.5	M12
<b>VFL208</b>	6-15/16	3-15/16	1-3/8	5-43/64	35/64	21/32	53/64	2-1/32	1.937	0.748	7/16
	176	100	35	144	14	16.5	21	51.2	49.2	19.0	M12

**Note:** Variations of tolerance of the distance from the mounting surface to the center of the spherical bore for VFL204 to VFL208 = ± 0.5 mm  
 Variations of tolerance of the position of the bolt hole for VFL204 to VFL208 = ± 0.7 mm

# DESIGNATION SYSTEM

## CORROSION-RESISTANT MOUNTED BALL BEARING UNITS



DESIGNATION	ATTRIBUTE	ATTRIBUTE
Insert bearing type	UC	set screw locking, standard
	SP	pillow block, stainless steel
Housing model type	SPA	pillow block with tapped base, stainless steel
	SF	four-bolt flange, stainless steel
	SFL	two-bolt flange, stainless steel
	VP	pillow block, thermoplastic
	VPAN	pillow block with tapped base, thermoplastic
	VF	four-bolt flange, thermoplastic
	VFL	two-bolt flange, thermoplastic
	Diameter series	2
Bore reference number		for reference number: 00 = 10 mm bore reference diameter; 01 = 12; 02 = 15; 03 = 17
		for reference number 04 and greater: multiply x 5 for bore reference diameter in millimeters

DESIGNATION	ATTRIBUTE	ATTRIBUTE
Bore diameter	blank	for metric shafts: bore diameter is equivalent to bore reference
	-XX	for inch dimension shafts: bore diameter is expressed in units of 1/16 inch -12 = 12/16 = 3/4 inch
Bearing material specification	S	stainless steel rings, balls, cage and slinger

**NSK**



## NSK AMERICAS

### UNITED STATES

NSK Corporation  
Ann Arbor MI  
1.888.446.5675

### CANADA

NSK Canada Inc.  
Brampton ON  
1.905.890.9740

### MEXICO

NSK Rodamientos Mexicana,  
S.A. de C.V.  
Silao Guanajuato MX  
52.472.500.9500

### BRAZIL

NSK Brasil Ltda.  
Suzano SP  
55.11.4744.2500

### ARGENTINA

NSK Argentina SRL  
Buenos Aires  
54.11.4704.5100

### LATIN AMERICA

NSK Latin America Inc.  
Miramar FL  
1.305.477.0605

Website: [www.nsk.com/am-en](http://www.nsk.com/am-en)  
NSK Global: [www.nsk.com](http://www.nsk.com)

Every care has been taken to ensure the accuracy of the data contained in this brochure, but no liability will be accepted for any loss or damage suffered through errors or omissions.

Printed in the USA ©NSK 2026.  
The contents of this publication are copyrighted by the publishers.